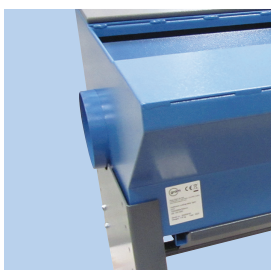


Educational cutting table with clamp fixture

- Oxygen cutting table for plate reduction
- Typical application places: Institutions and technical schools
- Delivered with built-in clamp plate for locking of plate by foot pedal
- User-friendly design
- Dimension: 1000 x 650 x 760mm
- Height-adjustable: 702-902mm
- Connection nipple in both table sides
 - delivered with bottom covering of unused connection nipple

Item no.: 02 150 000



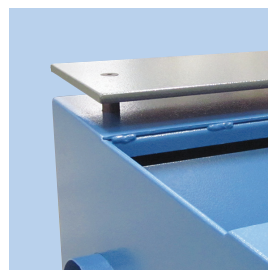
Connection

Connection nipple in both sides $\varnothing 160$ mm.



Dust container

Easy access to dust container for emptying.



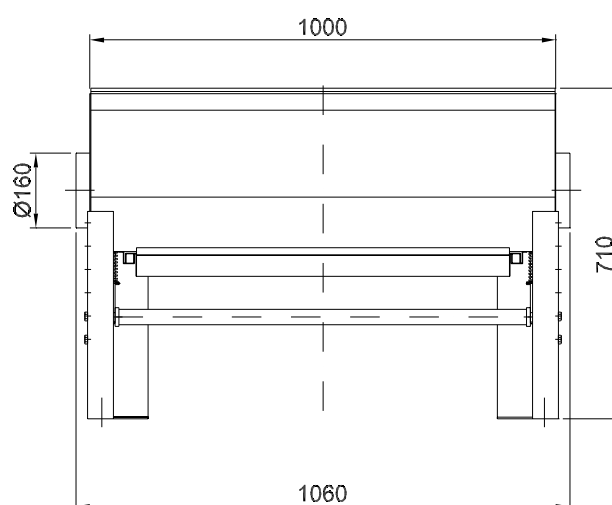
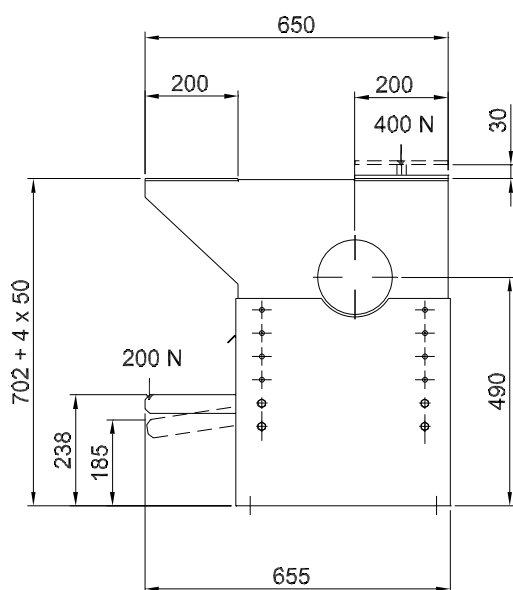
Locking of workpiece

Clamp plate holds the workpiece in place during machining.



Foot pedal

With easy/light pressure on foot pedal, the clamp plate is lifted.



Colour: RAL 5007/7011 (structure)



Gram Clean Air A/S
www.GramCleanAir.com

2.OXY1