



Compact compressed-air cleaned filter unit with timer control for filtration of welding fume, grinding dust, cutting fume and dusty air containing metal, rock, plastic etc. or from handling various powder mixes.

CJF: Air volume: Up to 4,400m³/h
Vacuum: Up to 5,000Pa
Filter area: 13 - 84m²

CJF-V: Air volume: Up to 4,400m³/h
Vacuum: Up to 40,000Pa
Filter area: 13 - 84m²

CJF-HV: Air volume: Up to 4,400m³/h
Vacuum: Up to 80,000Pa
Filter area: 13 - 84m²

Description

- Polluted air enters unit through tangential inlet in raw air chamber top. Hereby downflow and preseparation by cyclone effect are ensured, which contributes to load reduction on the filter media itself.
- Air is filtered through vertical-placed filter cartridge with internal filter core, which optimizes cleaning effect.
- Timer-controlled filter cleaning by integrated compressed-air system with pressure tank and jet valve.
- Clean air is led out through connection above in unit side.
- Dust is collected in dust container in unit bottom. Quick-lock-adjustable dust container system suspended in ø400mm system flange.

Efficient cleaning for the price

Complete and simple unit with timer control. Inlet with downflow, preseparation by cyclone effect as well as optimized filter cleaning ensure lower differential pressure above the filter cartridge. Hereby longer operating times with fewer shutdowns are obtained.

Simple mounting, connection and operation

Filter unit is delivered fully assembled, is raised and connected. Drawn cable with plug and compressed-air supply hose make installation and connection easy. Filters are easily replaced from unit top. Quicklock-adjustable dust container on 4 turnable wheels ensures user-friendly dust container service.



Connection and operation

Differential pressure above filter is read in integrated manometer. Supply connections are drawn out of unit.



Dust container

Cone bottom is finished with ø400mm system flange. Standard 70L dust container(excl.sackholder) with 4 turnable wheels.



Easy filter replacement with limited dust generation

Cartridge replacement is performed by bayonet suspension, which is loosened from clean air chamber and inserted into sack.



Reinforced construction for high vacuum

CJF-V can be used at pressure up to 40,000Pa. CJF-HV can be used at pressure up to 80,000Pa.

- Filters:**
- Filter cartridge $\varnothing 325\text{mm}$. Length: 660/1320mm
- Filter control:**
- Type TC1-timer control without automatic after-cleaning. 230V AC (constant)
Should be connected with delayed disconnection in relation to fan stop to obtain after-cleaning
 - Compressed-air: 5.5 - 6.0 bar dry compressed-air. Unit equipped with $\varnothing 8\text{mm}$ pneumatic hose
 - Differential pressure displayed in integrated manometer
 - 1"-jet valve connected to central compressed-air tank in clean air chamber

Filter change: Standard from clean air chamber top

Filter material:

Standard	Material	Used for
G102	Polyester flake	Dry not-static loaded or hygroscopic dust particles $> 0.2\mu\text{m}$
Alternative		
G105	Cellulose/Polyester	Welding/soldering
G107	Cellulose/Polyester Nano	Smoke and soot particles
G113	Polyester flake with PFPT-coating, antistatic	Static-loaded or hygroscopic particles
G115A	Polyester flake with teflon membrane	Finer dust sorts, e.g. cutting fume from plasma, flame and laser cutting
G116A	Polyester flake with teflon membrane, antistatic	Finer static-loaded dust sorts



The filters meet demands for extraction degree for dust class M according to DIN EN 60335-2-69 Appendix AA (extraction degree $> 99.9\%$).

Principle sketch for flow through cyclone filter type CJF/CJF-V/CJF-HV:

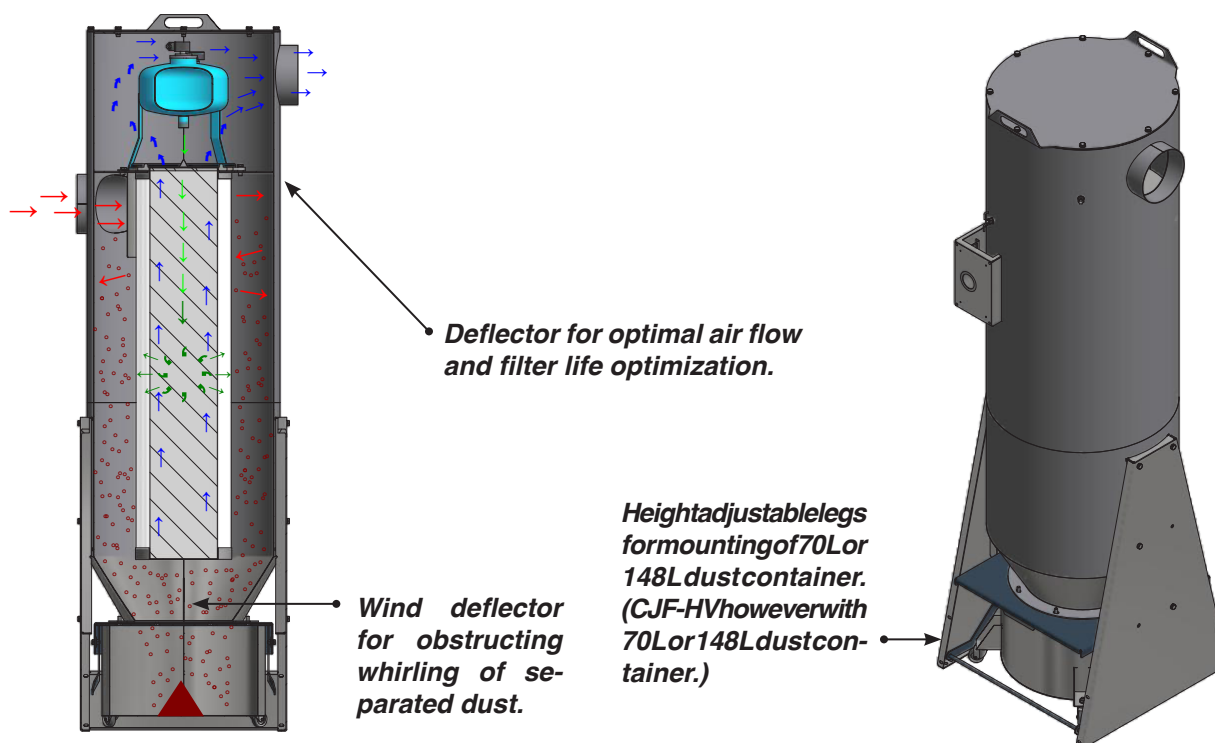




Photo:
Cyclone filter type CJF-V 13

Construction/surface:

Cyclone filter type CJF/CJF-V/CJF-HV is constructed according to:

- Machine directive 2006/42/EU
- EMC-directive 2014/30/EU
- Directive 2014/68/EU about pressure equipment
- Low voltage directive 2014/35/EU
- Harmonized standards: EN 13854, EN 4414, EN 12100, EN 60204-1, EN ISO 13857
- Further standards: ISO 3746

Filter cabinet is made in 2mm black steel plate
Surface powder enamelled RAL 5007/7011 structure



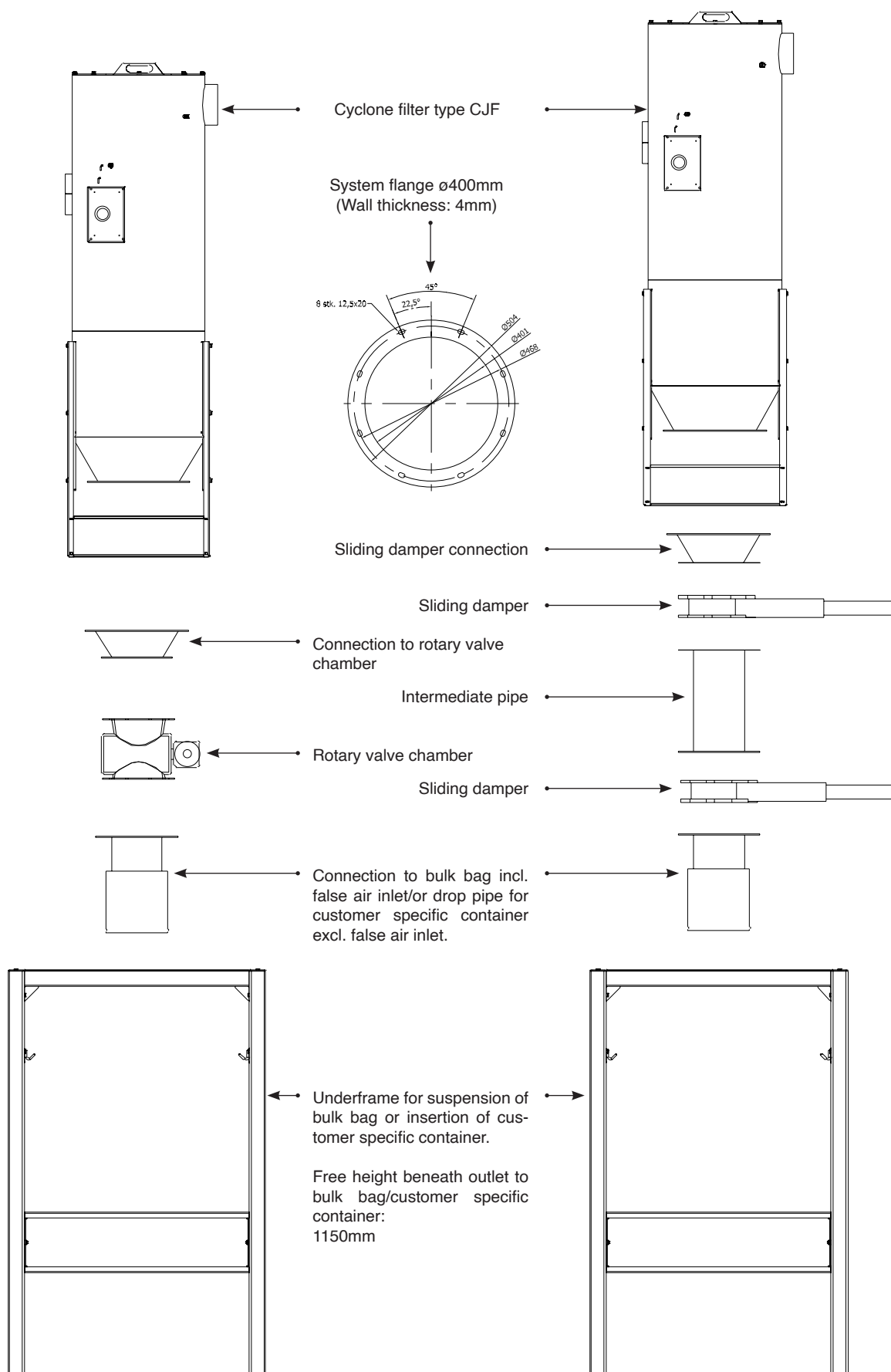
Photo:
Cyclone filter type CJF 13 with
differential pressure control

Further is available:

- Version in hot-galvanized, enamelled steel plates for outdoor mounting
- Mirrored connections on inlet/outlet
- Filter replacement from unit side
- Filter control type ECO-S, differential pressure control with automatic after-cleaning
- Backdraft damper type KTR for piping placement
- Sack holder for 72L/67L dust container
- 150L/145L dust container with sack holder*
- Underframe and connections for bulk bag and drop pipe for customer specific containers (see sketch next page)
- ½"-water separator with manometer and pressure reducing valve
- Temperature sensor type RT101 as well as alarm devices
- Precoat unit type PCA
- Precoat 11.5kg in sack
- Explosion-protected/-relieved version for installation in ATEX-zones (see ATEX data sheet)

* Note: Unit height is increased by 330mm

Principle sketch for equipment for cyclone filter type CJF:



We refer to the Gram price list for the complete program!

Cyclone filter type CJF/CJF-V/CJF-HV is available in the sizes as stated in the forms below. CJF-V and CJF-HV are for high-vacuum application.

Please, contact us for assistance in selecting the optimal unit taking into consideration air volume, dust type and volume, operation times etc.

Cyclone filter type CJF (max. 5,000Pa):

Type	Order no.	ΔP start/end ³⁾ [Pa]	Number filter car- tridge	Number jet valve	G102 filter area [m ²]	G105 filter area [m ²]	Com- pressed- air [L/min.]	Number dust con- tainer (stand.) [L]	Number dust con- tainer (option ⁴⁾) [L]	Weight [kg]
CJF 13	04 505 000	200/2000	1 ¹⁾	1	13	21	3.0	1x70	1x148	120
CJF 26	04 506 000	200/2000	1 ²⁾	1	26	42	3.0	1x70	1x148	150
CJF 52	04 507 000	200/2000	2 ²⁾	2	52	84	3.0	1x70	1x148	190

Cyclone filter type CJF-V (max. 40,000Pa):

Type	Order no.	ΔP start/end ³⁾ [Pa]	Number filter car- tridge	Number jet valve	G102 filter area [m ²]	G105 filter area [m ²]	Com- pressed- air [L/min.]	Number dust con- tainer (stand.) [L]	Number dust con- tainer (option ⁴⁾) [L]	Weight [kg]
CJF-V 13	04 505 600	200/2000	1 ¹⁾	1	13	21	3.0	1x70	1x148	120
CJF-V 26	04 506 600	200/2000	1 ²⁾	1	26	42	3.0	1x70	1x148	150
CJF-V 52	04 507 600	200/2000	2 ²⁾	2	52	84	3.0	1x70	1x148	190

Cyclone filter type CJF-HV (max. 80,000Pa):

Type	Order no.	ΔP start/end ³⁾ [Pa]	Number filter car- tridge	Number jet valve	G102 filter area [m ²]	G105 filter area [m ²]	Com- pressed- air [L/min.]	Number dust con- tainer (stand.) [L]	Number dust con- tainer (option ⁴⁾) [L]	Weight [kg]
CJF-HV 13	04 505 700	200/2000	1 ¹⁾	1	13	21	3,0	1x70	1x148	135
CJF-HV 26	04 506 700	200/2000	1 ²⁾	1	26	42	3,0	1x70	1x148	165
CJF-HV 52	04 507 700	200/2000	2 ²⁾	2	52	84	3,0	1x70	1x148	210

¹⁾ Filter cartridge $\phi 325 \times 660\text{mm}/\phi 13.5\text{mm}$, 13m², G102 (08 128 100)

²⁾ Filter cartridge $\phi 325 \times 1320\text{mm}/\phi 13.5\text{mm}$, 26m², G102 (08 129 000)

³⁾ Pressure drop stated over filter cartridge

⁴⁾ Please, note that unit height is increased by 330mm.