

**LV 3000**

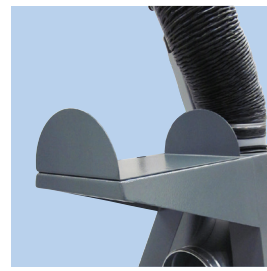
- Mobile extraction arm
- With nipple connection piece for connection to central extraction
- Trolley with 4 wheels, where 2 are turnable and fitted with brakes
- Arm type RGF available in length 3m
- Arm can turn freely 360°
- With combined hose bracket/handle
- Low centre of gravity
- Suitable for changing workplace with possibility for connection to central extraction

**Quick coupling**

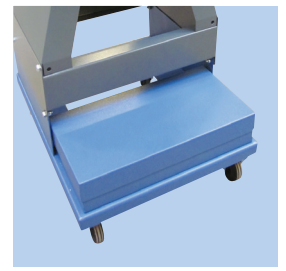
Can be fitted with quick coupling for extension hose.

**Hood**

Hood is as standard fitted with damper. Automatic action switch and spotlight are available.

**Combination handle**

Handle can also be used as hose bracket.

**Counterweight**

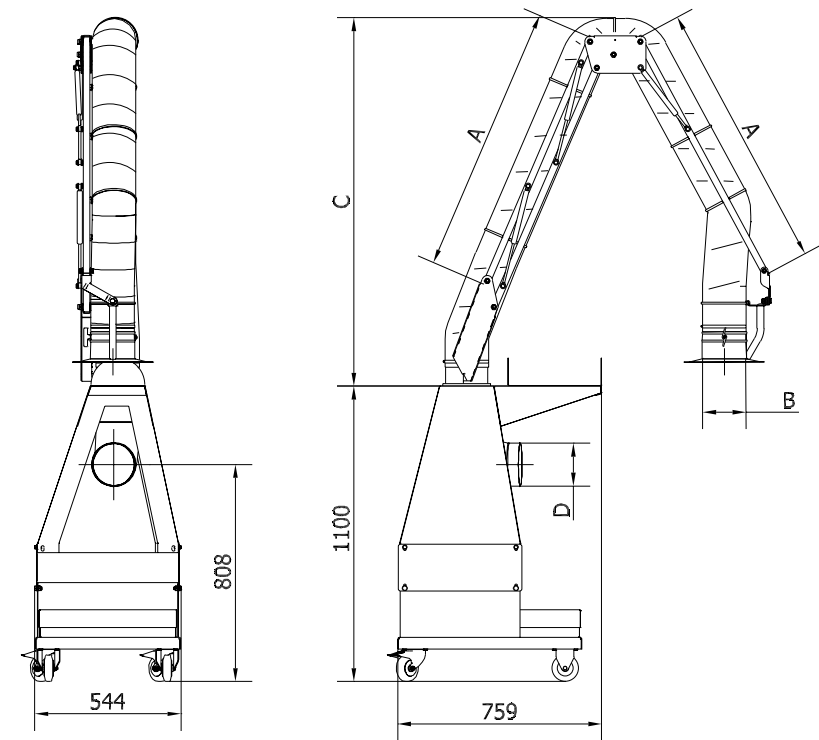
Delivered with counterweight.

The arm is designed with outer bar system. This reduces wear, increases air flow and makes service and adjustment easier.

Colour: 5007/7011/colour code 9965 silver (structure)

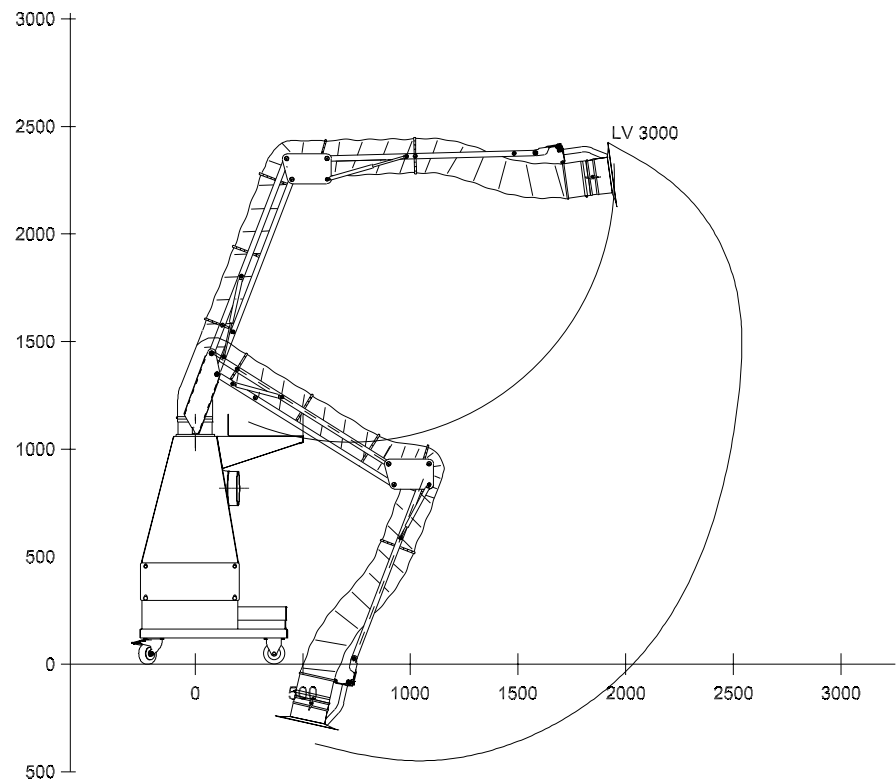


**Gram Clean Air A/S**  
www.GramCleanAir.com



Type	Order no.	Arm	A	B	C	D
LV 3000	01 751 600	RGF 3000	1000	ø161	1372	ø160

Range LV 3000 (ø160mm):



Arm can rotate freely 360° in console.

Rev. 11.22 Data is subject to alterations