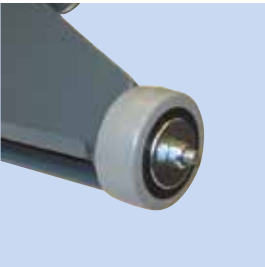




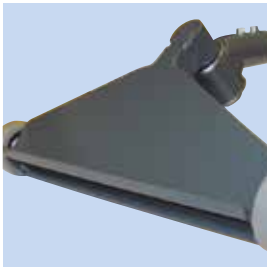
Photos:
GST 500 (left)
GST 300 (right)

Gram floor extraction handle

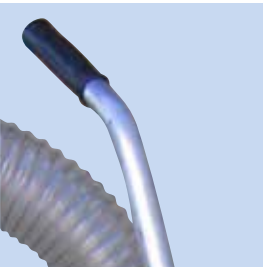
- Especially suitable for use in connection with Gram filter unit type FRS
- Used for cleaning floors in an efficient and ergonomically correct way
- Standard Gram floor extraction handle fits ø80mm hose



Wheels
Floor extraction handle is fitted with 50mm rubber wheels.



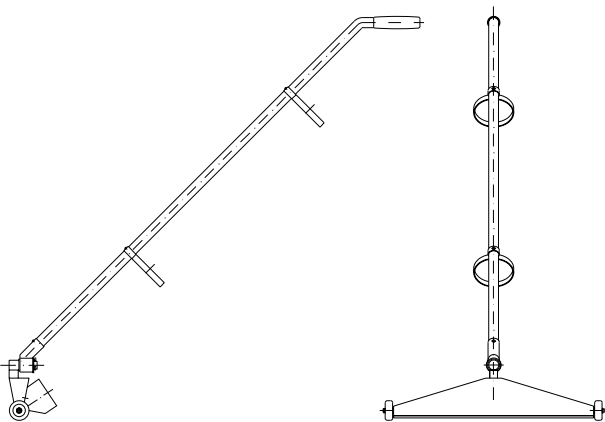
Nozzles
Designed with easy turnable floor nozzle.



Handle
Floor extraction handle is equipped with userfriendly handle.



Equipment
Adaptor type KI is used for coupling to flap valve type KV.



Order no.*	Width [mm]	Connection piece [mm]	Weight [kg]
06 909 900	300	ø63	2,0
06 910 900	300	ø76	2,0
06 910 950	300	ø80	2,0
06 910 000	500	ø80	2,5

* Excl. hose

Colour: RAL 5007/7011 (structure)