


Technical data: Temperature sensor RT101

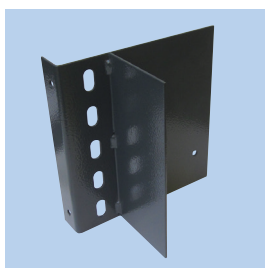
Temperature:	Adjustable between 25 - 90°C
Protection rating:	IP 66
Sensor size:	ø9.5 x 80mm
Contact class:	AC1 = 10A, 400V
Capillary pipe length:	2.000mm
Ambient temperature:	-50° - +70°C
Max. sensor temperature:	300°C
Reset function:	Automatic
Electr. connection:	2x Pg 13.5
Contact combination:	EN 60947-4/5
Order no.:	09 622 000

Temperature sensor mounting type RT101 mounted outside on filter unit as well as capillary pipe inserted by cable gland (Pg 13.5)

09 622 500

Mounting bracket for temperature sensor type RT101 for angle unit mounting. With heat shield, so thermal stress from surface is reduced.

04 077 185


Mounting bracket

Angle mounting bracket for temperature sensor type RT101.

Description RT101

Temperature sensor for signaling at too high temperature in units/channels (60°C).

Construction

- Thermostat with fixed-mounted capillary pipe
- Adjusting possibility for temperature between 25°C and 90°C
- Has standard potential-free open/close switch

Application

- Used for outlet from filter units or the like, where there is a fire risk. Can register temperatures between 25°-90°C.

Mounting

Temperature sensor type RT101 mounted with angle mounting bracket as well as capillary pipe inserted in outlet from Filterline type FL.

